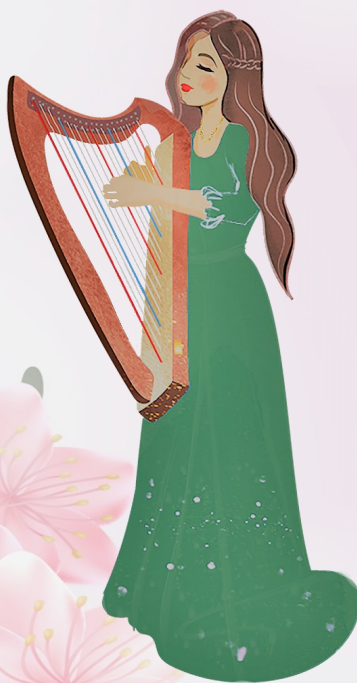


Now Is the Month of Maying

for lap harp



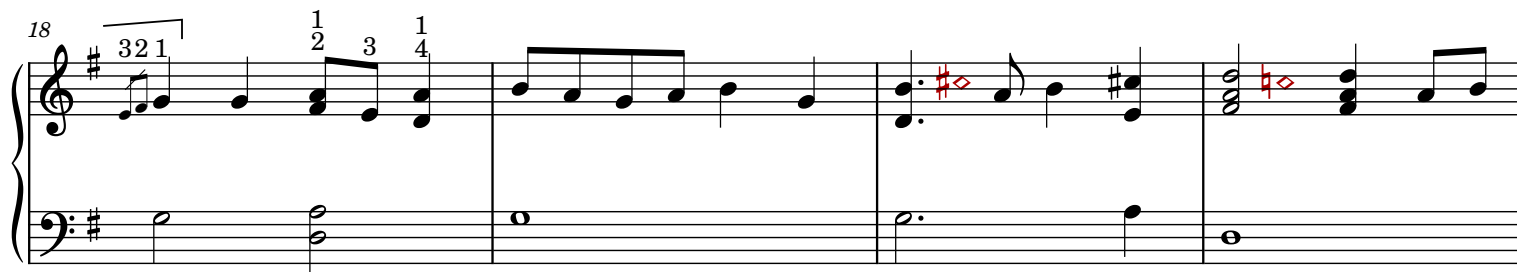
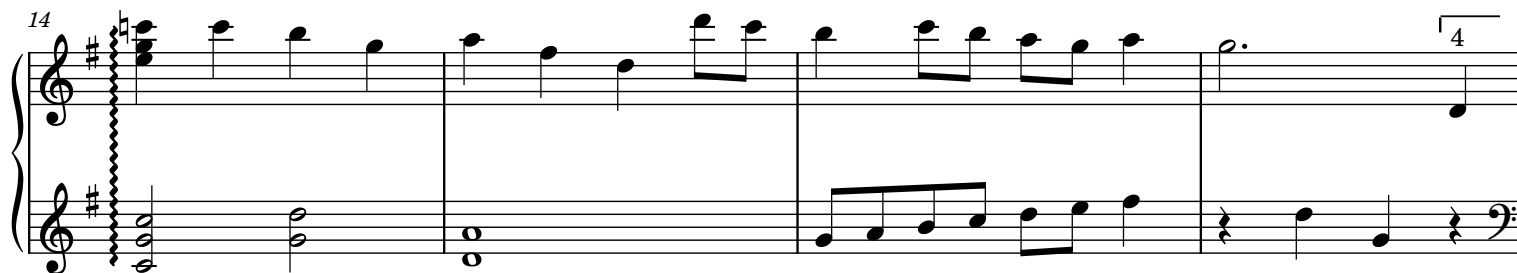
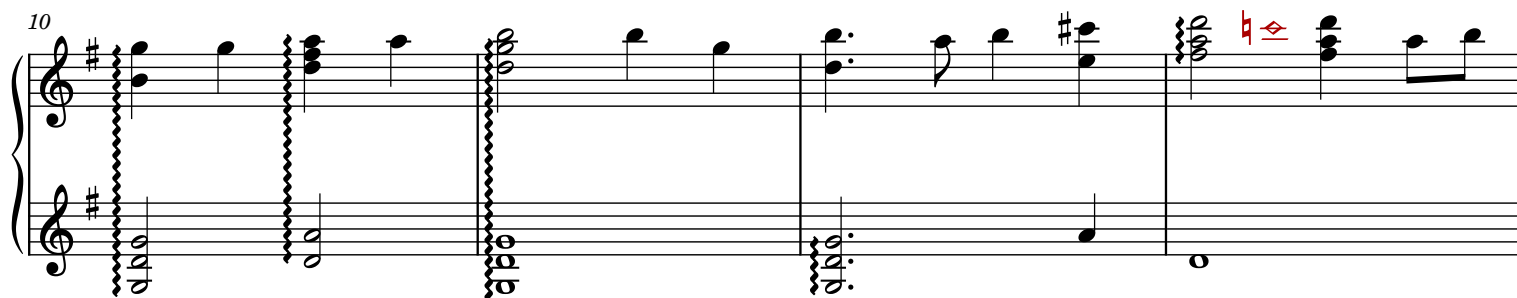
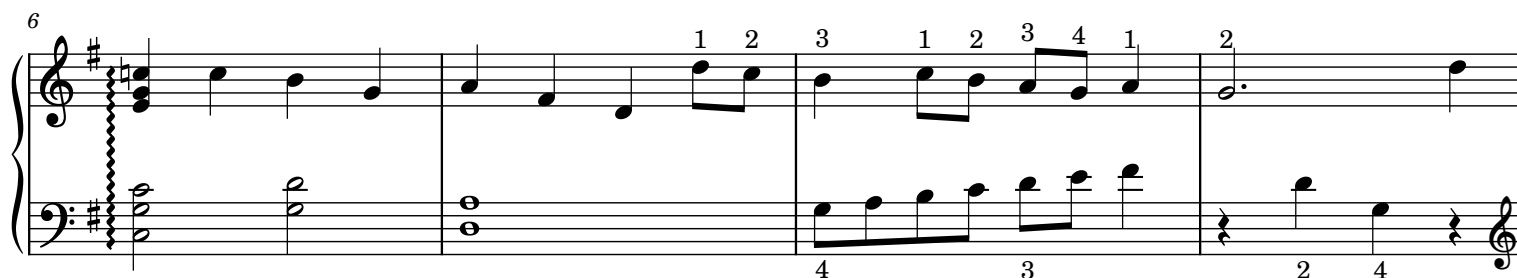
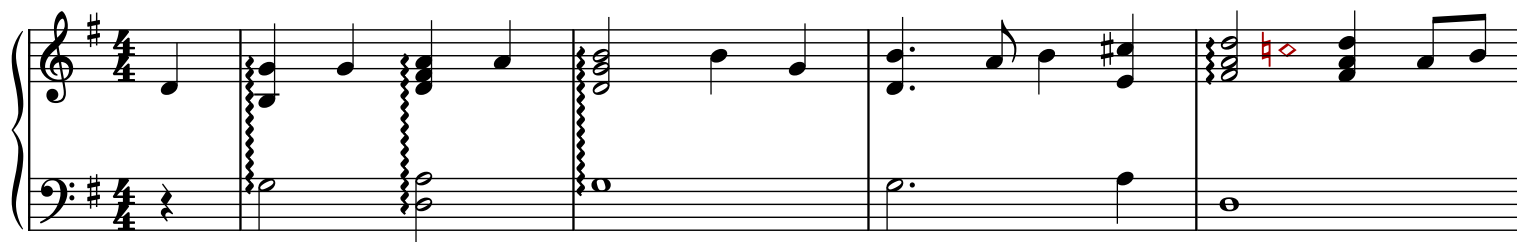
by Thomas Morley
arr. by Debbie Vinick



Now is the Month of Maying

for lap harp

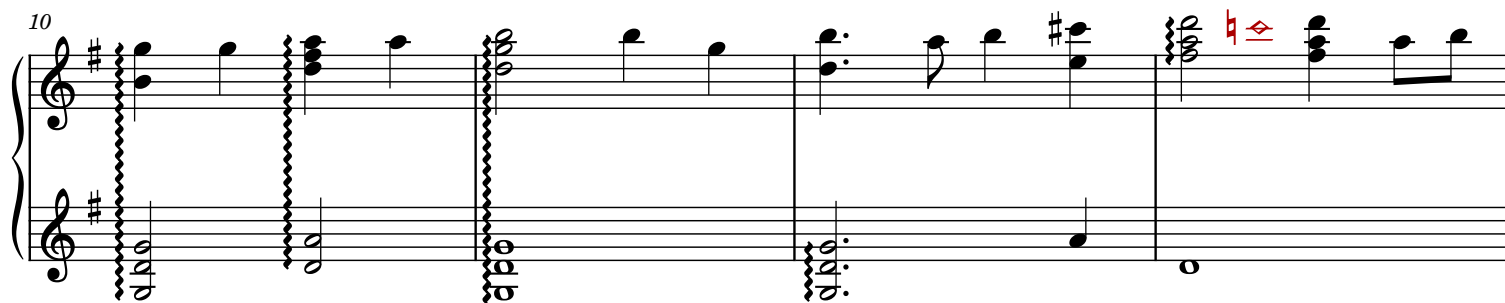
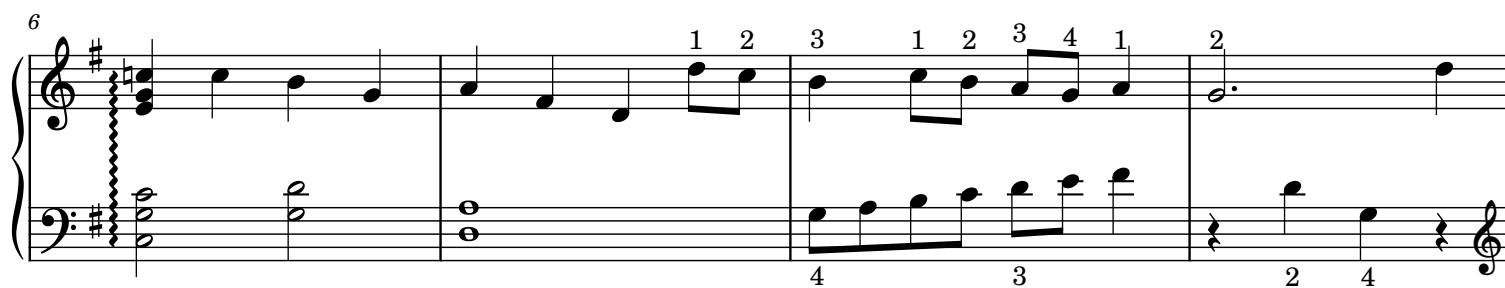
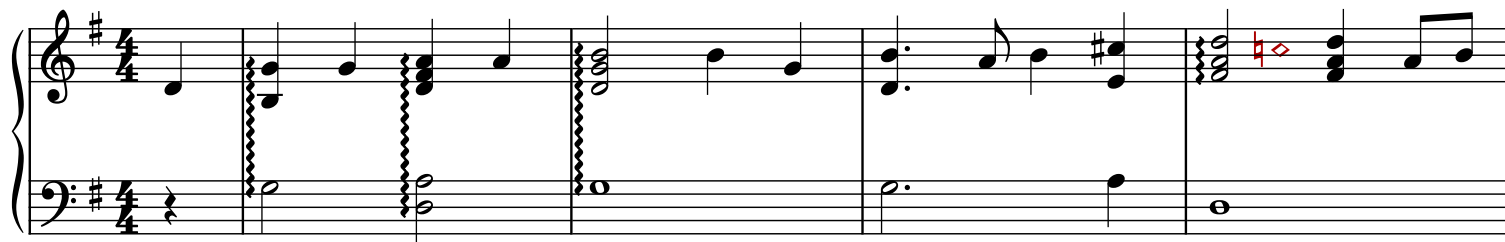
Thomas Morley 1595
arr. by Debbie Vinick



Now is the Month of Maying

for lap harp

Thomas Morley 1595
arr. by Debbie Vinick



14

Measures 14-17. Treble clef, key of D major. Measure 14 has a wavy line. Measure 17 has a 4-measure rest.

18

Measures 18-21. Treble clef, key of D major. Measure 18 has a 321 fingering. Measure 20 has a red sharp and diamond. Measure 21 has a red flat and diamond.

22

Measures 22-25. Treble clef, key of D major. Measure 22 has a 1 2 3 1 2 fingering. Measure 23 has a 1 1 fingering. Measure 24 has a rit. marking. Measure 25 has a 1 2 1 fingering.